

Mouse Monoclonal Antibody to

Maltose Binding Protein (MBP)

clone 6E4

Order No.: 0101-100/MBP-6E4

Size (µg) 100

Lot No.: 0101S



www.nanotools.de

orders & support:

email: info@nanotools.de

phone: +49-7641-455 670

fax: +49-7641-455 671

01/050307F

Isotype	Species Reactivity	Applications	Mol. Weight	Ref.Cell Line	Epitope	Immunogen
IgG1		WB, ELISA	43 kDa			MBP (Maltose Binding Protein)

Background and Specificity:

Maltose Binding Protein (MBP), the *E. coli* malE gene product, is widely used as fusion partner for the expression of recombinant proteins.

Mab MBP-6E4 can be used for the detection of MBP fusion proteins in Western blot and ELISA applications.

Purification: The antibody was purified from serum-free cell culture supernatant by subsequent thiophilic adsorption and size exclusion chromatography.

Formulation: lyophilized from 1 ml 2 x PBS / 0.09 % Na-azide / PEG and Sucrose.

Reconstitution: Reconstitute with 1 ml H₂O (15 min, RT).

Stability: For long-term storage, freeze lyophilizate upon arrival (-20°C). Upon reconstitution, aliquote and freeze in liquid nitrogen; reconstituted antibody can be stored frozen at -80°C up to 1 year. Thaw aliquots at 37°C. Thawed aliquots may be stored at 4°C up to 3 months.

Avoid repeated freeze / thaw cycles.

Positive Control: none

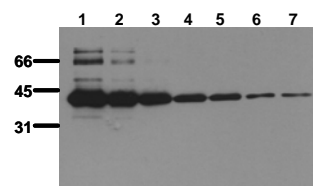
Immunoblotting: 0.5 µg/ml for HRPO/ECL detection.
Recommended blocking buffer: Casein/Tween 20 based blocking and blot incubation buffer, e.g. nanoTools product #3031-500/CPPT or #3031-3000/CPPT.

Immunoprecipitation: ND

Immunocytochemistry: ND

ELISA: use at 0.05 µg/ml

Related Products



Antibody sensitivity

MBP was separated by SDS-PAGE and transferred to PVDF membranes. Immunoblots were probed with mab 6E4 (0.5 µg/ml) for 1h at RT and developed by ECL (exp. time: 30 sec). lane 1: 100ng MBP, lane 2: 50ng, lane 3: 25ng, lane 4: 10ng, lane 5: 5ng, lane 6: 2ng, lane 7: 1ng

All products are supplied for research and investigational use only. Not for use in humans or laboratory animals.