

## Mouse Monoclonal Antibody to

# Pyk2/CAK $\beta$ (phospho-Tyr 402)

## clone 14F6

**Order No.:** 0081-100/Pyk2/CAK $\beta$ -14F6

**Size ( $\mu$ g)** 100

**Lot No.:** 0081S



[www.nanotools.de](http://www.nanotools.de)

**orders & support:**

email: [info@nanotools.de](mailto:info@nanotools.de)

phone: +49-7641-455 670

fax: +49-7641-455 671

02/160307F

Isotype	Species Reactivity	Applications	Mol. Weight	Ref.Cell Line	Epitope	Immunogen
IgG1	human, mouse, rat	WB, ELISA	116 kDa	none	phosphotyrosine 402 S D I pY A E I	phosphopeptide conjugated to KLH

### Background and Specificity:

Proline-rich tyrosine kinase 2 (Pyk2; also known as cellular adhesion kinase  $\beta$ , CAK  $\beta$ ) is a 116 kDa cytoplasmic tyrosine kinase. Pyk2 is rapidly phosphorylated on tyrosine residues in response to activation by G-protein-coupled receptors as well as stress signals. Phosphorylation of Pyk2 leads to activation of stress-activated kinase 1 and 2 (SAPK1 and SAPK2).

**Mab Pyk2/CAK $\beta$ -14F6** specifically interacts with activated Pyk2/CAK $\beta$  phosphorylated at tyrosine 402. The antibody does not crossreact with the non-phosphorylated form of Pyk2/CAK $\beta$  nor with unrelated phosphorylation sites.

### Related Products

<b>Purification:</b>	The antibody was purified from serum-free cell culture supernatant by subsequent thiophilic adsorption and size exclusion chromatography.
<b>Formulation:</b>	lyophilized from 1 ml 2 x PBS / 0.09 % Na-azide / PEG and Sucrose.
<b>Reconstitution:</b>	Reconstitute with 1 ml H <sub>2</sub> O (15 min, RT).
<b>Stability:</b>	For long-term storage, freeze lyophilizate upon arrival (-20°C). Upon reconstitution, aliquote and freeze in liquid nitrogen; reconstituted antibody can be stored frozen at -80°C up to 1 year. Thaw aliquots at 37°C. Thawed aliquots may be stored at 4°C up to 3 months.

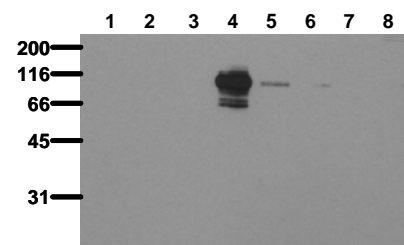
**Avoid repeated freeze / thaw cycles.**

<b>Positive Control:</b>	none
<b>Immunoblotting:</b>	0.5 $\mu$ g/ml for HRPO/ECL detection <b>Recommended blocking buffer:</b> Casein/Tween 20 based blocking and blot incubation buffer, e.g. nanoTools product #3031-500/CPPT or #3031-3000/CPPT.

**Immunoprecipitation:** ND

**Immunocytochemistry:** ND

**ELISA:** use at 0.05  $\mu$ g/ml



### Transactivation of PYK2

Whole cell lysates of serum starved HepG2 tumor cells (20.000 cells per lane) were applied to SDS-PAGE and transferred to PVDF membranes. Immunoblots were probed with mab PYK2-14F6 (0.5  $\mu$ g/ ml) for 1h at RT and developed by ECL (exp. time: 30 sec).

lane 1:Co; lane 2: serum; lane 3: EGF; lane 4: H2O2; lane 5: Anisomycin; lane 6: Sorbit; lane 7: Arsen; lane 8: Ceramide;

**All products are supplied for research and investigational use only. Not for use in humans or laboratory animals.**