

Serum-free Media

Panserin C6000 is a protein-free ready to use medium for an optimized growth of CHO-cells (Chinese Hamster Ovary) and their recombinant derivatives in suspension culture. These cells are often used for the production of recombinant proteins for diagnostic or therapeutic purposes. Panserin C6000 is suitable for spinner cultures, roller bottles and tissue culture flasks and bioreactors.

Composition

Panserin C6000 consists of a balanced mixture of salts, amino acids, vitamins, trace elements, hormones and is enriched with select herbal hydrolysates for an optimized growth of CHO-cells in suspension culture. As Panserin C6000 is free of animal or human components it is predestined for the use in sensitive production areas (e.g. production of diagnostic or therapeutic tools) where safety requirements prohibit the use human or animal components.

Suitability

Protein-free cultivation of CHO-cells and their recombinant derivatives in suspension culture for the production of recombinant proteins for diagnostics or therapeutic purposes.

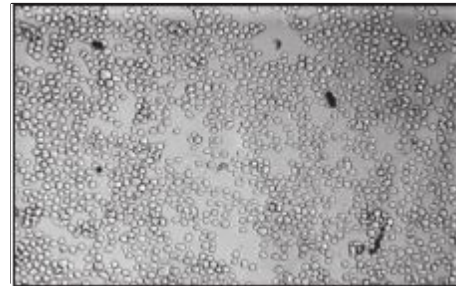
Special advantages

The formulation of the protein-free Panserin C6000 with a low concentration of plant hydrolysates enables a high cell yield in combination with excellent production rates of recombinant proteins. The ready to use complete protein-free medium allows easy handling and therefore reduces contamination risks and ensures for an easy and economic purification of the final products in downstream processes. Due to the optimized composition of Panserin C6000 the cells expand and grow in single-cell suspension with a very low tendency to form aggregates.

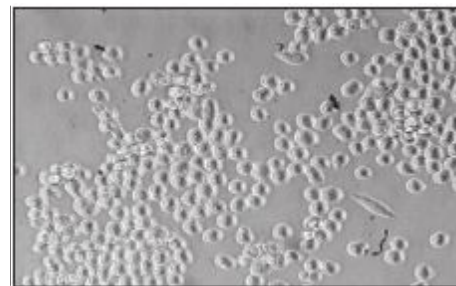
Instructions for use

Detailed instructions will be provided with the accompanying datasheet for Panserin C6000. In addition, instructions for use can also be found at www.pan-biotech.com.

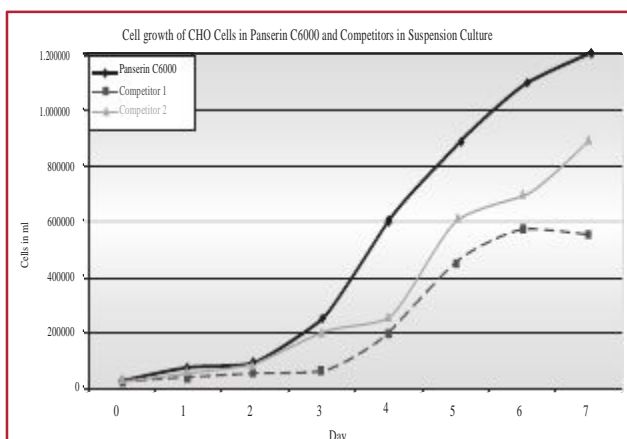
Most CHO-cells can be directly transferred from a serum containing adherent culture into the protein-free suspension culture. In most cases the stable suspension culture is developing within about 2 weeks.



CHO cells in Panserin C6000



CHO cells in Panserin C6000



Panserin C6000 ⁽¹⁾	100 ml	P04-716000M
	500 ml	P04-716000

(1) usually on stock, (2) minimum order 10 l, (3) available on request